



# AI Readiness

*Assessing Your Organization's Tech,  
Data, and Staff Capacities to Leverage AI*

October 2nd, 2024



# Linda Widdop

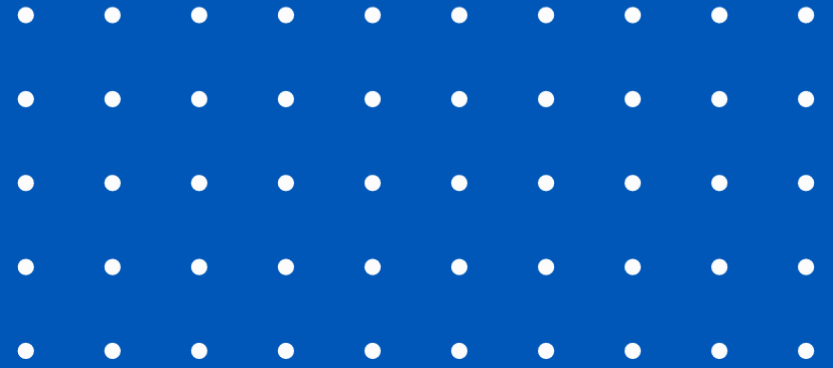
Chief Innovation Officer



# Erica Blake

Senior Consultant, Impact Strategy





1. AI Definition/Overview
2. Introduction to Tech Impact's AI Readiness Assessment
3. Small Group Discussions
4. Small Group Report Back

**Agenda**

# What is artificial intelligence?



*A machine-based system that can for a given set of human-defined objectives, make predictions, recommendations or decisions influencing real or virtual environments*

# Importance of AI Technologies for Nonprofits

AI technologies can offer a wide range of benefits to organizations, such as:

- improved efficiency,
- cost reduction, and
- competitive advantage.

AI systems can automate repetitive tasks, identify patterns in data, and provide insights for better decision-making.



# Are You Ready?

AI holds great potential for nonprofits (as you've heard throughout the conference) but many nonprofits are not in a position to take advantage of AI. Why?

- AI needs to have a **PURPOSE** defined by you
- AI relies on **DATA** to work
- AI relies on **HUMAN INPUTS** to work
- AI can produce **ETHICAL** challenges
- AI needs **CARE AND FEEDING** to continue to produce results



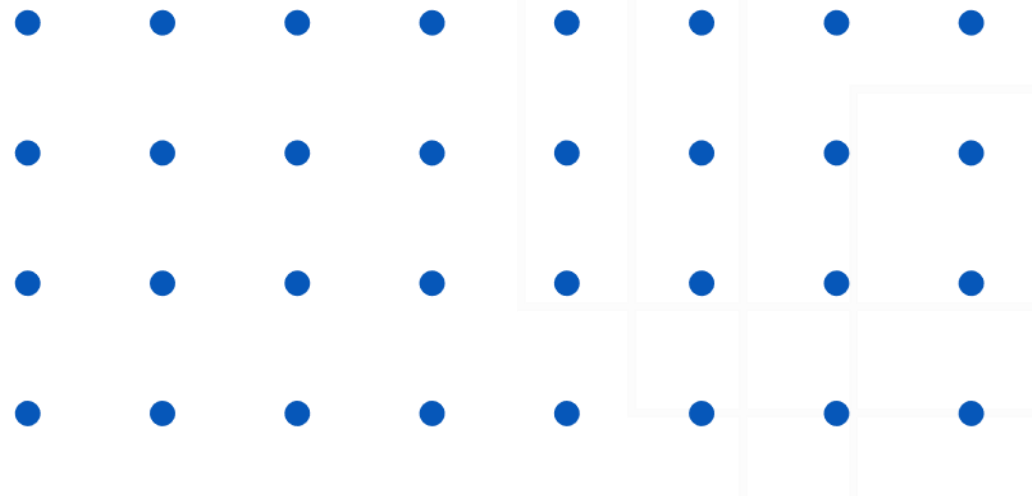


**We want to explore Tech  
Impact's new AI Readiness  
assessment with you today**

**We want you to leave the session with an overview of what your organization needs to be ready to integrate new technologies including AI into your operations.**

## AI Readiness Dimensions

- ☐ Vision & Strategy
- ☐ Governance & Ethics
- ☐ Measurement & Evaluation
- ☐ Data & Infrastructure
- ☐ Skills & Capabilities
- ☐ Culture & Transparency
- ☐ External & Sustainable Support



# Domain #1: Vision & Strategy



# Vision & Strategy

- A strategic plan that includes AI considerations can significantly enhance your organization's operational efficiency and innovation potential. We recommend incorporating the following in your strategic planning:
- Developing and/or monitoring a strategic plan
- Inclusion of AI technologies in strategy
- AI leveraged in operations and future plans
- Modern Technology expertise within leadership
- Increasing capacity for innovation tasks/projects



# Domain #2: Governance & Ethics



# Governance & Ethics

- Robust governance and ethics policies are crucial for maintaining trust and compliance.
- Data and AI policy existence and development
- Cybersecurity systems and plans
- Governance oversight leadership
- Staff training on ethics and governance
- Communication process for risks and breaches

# Domain #3: Measurement & Evaluation



# Measurement & Evaluation

- Effective measurement and evaluation processes enable your organization to track progress and adjust strategies.
- Leadership consensus on impact creation
- Dedicated measurement, learning, and evaluation team
- Social impact model
- Experience with evaluation projects
- Capacity to leverage analytics for decision making

# Domain #4: Data & Infrastructure

# Data & Infrastructure

- High-quality, well-managed data is the backbone of successful AI integration.
- Data quality across the organization
- Data sharing restrictions and trend analysis
- Digital and cloud data storage
- Automation of recurring reports
- AI support in technology infrastructure

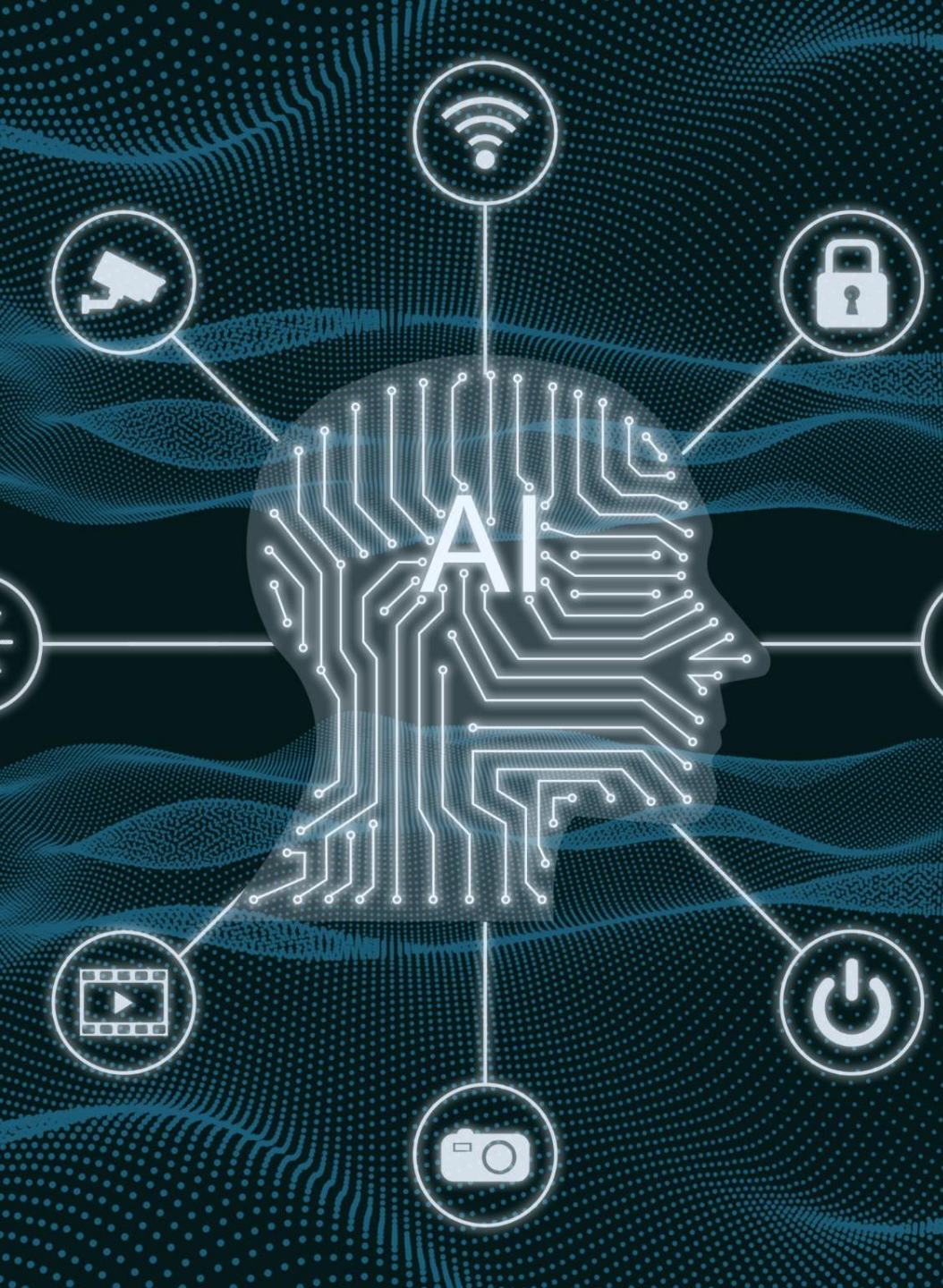


# Domain #5: Skills & Capabilities



# Skills & Capabilities

- Building AI literacy and technical skills within your team is essential for maximizing the benefits of AI.
- Curiosity towards AI in the workplace
- Tech-savviness and skill development time
- Introduction and experience with AI technologies
- Capacity for organization-wide AI training
- Likelihood of integrating AI into processes



# Domain #6: Culture & Transparency

# Culture & Transparency

- A strong culture of learning and transparency fosters innovation and trust within your organization.
- A Defined culture for learning
- Embedding of evaluation processes into your culture
- Assessment and addressing of systematic bias
- Concerns with AI adaptation among associates
- Receptiveness to communications and support for AI

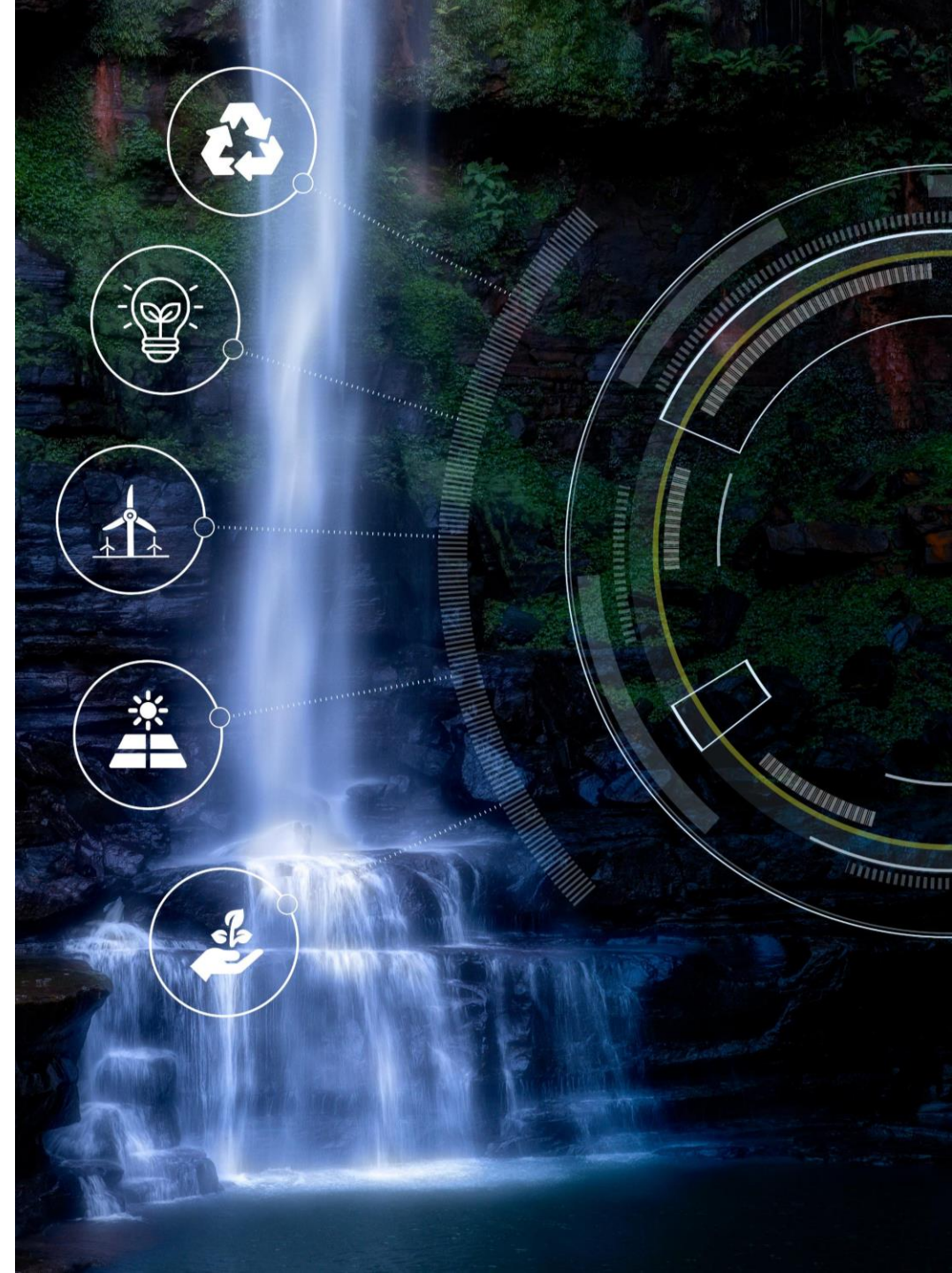


# Domain #7: Sustainable Support



# Sustainable Support

- Securing sustainable support is key to long-term success.
- Dedicated funding for data analytics
- Funds for AI innovation
- AI solutions to help offload workforce resource constraints
- Involvement in research projects and AI innovation



# Small Groups Breakouts

- Let's breakout by Domain
- Each group takes 1 – 2 Domains to assess your organizational capacity and discuss
- Report back to the full group to discuss

# Recommendations: Sneak Peak!

# AI READINESS – IT'S ALL ABOUT YOUR GOALS

- Operational or Aspirational?
- Lowering costs?
- Improving efficiency?
- Or taking your program to the next level?





## IMPACT ADVANCEMENT (OPERATIONAL)

- Automation of repetitive tasks
- System integration for more robust reporting
- Leveraging embedded AI technologies
  - CoPilot, Gemini, Einstein, Firefly



# AI ENGAGEMENT (ASPIRATIONAL)

- Incorporate AI into the automation process for customized results based on most relevant information
- Prompt Engineering to optimize AI performance
- Leverage and customize Large Language Models (LLMs) using RAG (Retrieval Augmented Generation) for authoritative responses
- Using data warehousing and engineering to build AI solutions for specific community impact goals







# Tech Impact Low-Cost Services



## AI CHECK

Get ready for the next wave of technology with an expert-guided assessment to ensure that your goals, systems and data structures are ready to incorporate AI, Automation and Analytics to power your social impact and business decisions. \$450



## TECH CHECK

Evaluate your organization's current technology use and digital maturity with an expert-guided technology capacity assessment tool. This offering connects you with a tech advisor who will assist with the assessment and deliver customized recommendations to help move your nonprofit forward. \$450



## SEC CHECK

Asses your nonprofit's needs and get actionable recommendations through this expert-guided security and compliance assessment. Help protect your organization and sensitive data by evaluating your maturity in categories including application, identity, infrastructure, and cloud security. \$450



## IT DISASTER RECOVERY PLANNING

Prepare for unthinkable events by investing in an IT Disaster Recovery Plan. Our planning process begins with a template that will guide you through the preparation process resulting in a succinct document your organization can count on when the unexpected happens. \$250



## NETWORK VULNERABILITY SCAN

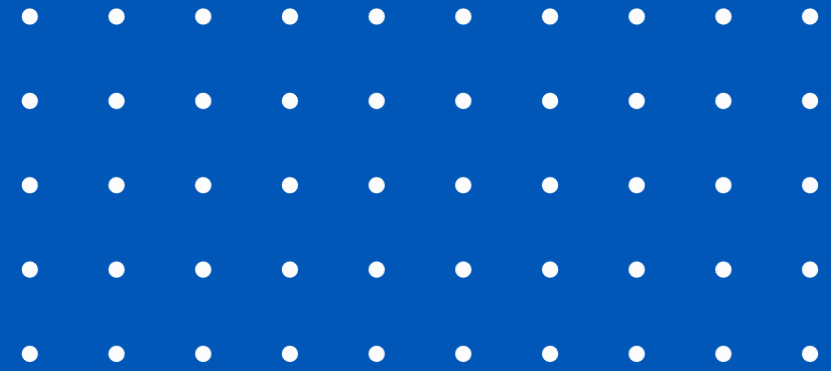
Check your vulnerabilities with a simulated attack against your nonprofit's public-facing/external IP addresses assigned to your network. Tests are designed to reveal weaknesses in your network's defenses. \$250



## POLICY BUILDER

Formalize your organization's policies with help from one of our tech advisors resulting in a comprehensive computer use policy reducing vulnerability to security and legal threats. \$450





# THANK YOU!

[LINDA@TECHIMPACT.ORG](mailto:LINDA@TECHIMPACT.ORG)

[ERICA@TECHIMPACT.ORG](mailto:ERICA@TECHIMPACT.ORG)