



# Placing a Bet on Community

*Working With Other Organizations to Use  
Tech to Advance Your Mission*

2022.09.19



# Hello!

I have an agenda.

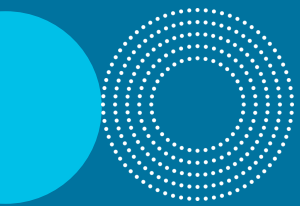
I believe that **being in community** with one another brings resilience.

I want you to believe this too.

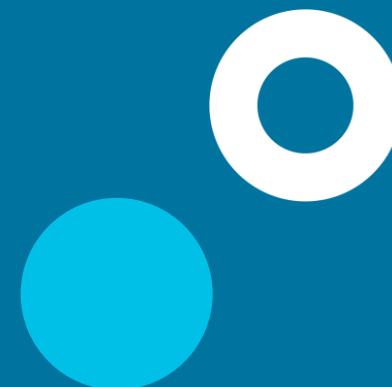
# An Emergent Impact Network

**By Melvin Chibole, Managing Director, TechSoup Africa**






*Communities are built on connections, and better connections usually provide better opportunities. But how do networks of these communities emerge? How do we strengthen them? And how are they sustained?*



We hear it from the  
organizations we  
work with.





*“We will share food sometimes, if there’s an abundance. Things that aren’t moving at one pantry, maybe another pantry might be able to use those things. I think also just resources, you know, especially during the pandemic when a lot of us lost volunteers and some of our resources. We were sharing information on how we’re doing things, systems, things like that... We try to share our resources as much as possible.”*

- Anonymous Food Security Research Participant, 2021



We see pieces of the  
answer in our own work.

# Find shelter faster for survivors of human trafficking, domestic violence, and sexual assault

[Apply to be a member](#)

# Safe Shelter Collaborative snapshot: **2,811 survivors helped**



## **SUPPORTERS**

**2,561** supporters  
are ready to fund  
emergency shelter



## **DONATED**

**\$59,585** donated  
via **918** donations\*

\* since 2014



## **REQUESTS**

**4,101** requests for  
shelter have resulted in  
**1,893** placements



## **AGENCIES**

**217** agencies in  
**18** states participate in  
the Safe Shelter Collaborative

# How do we institute it?



Believe in standards.



Believe in standards.



Solve for small.



Believe in standards.



Solve for small.



Data as a community asset.





# Welcome to Quad!

**Thank You!**

